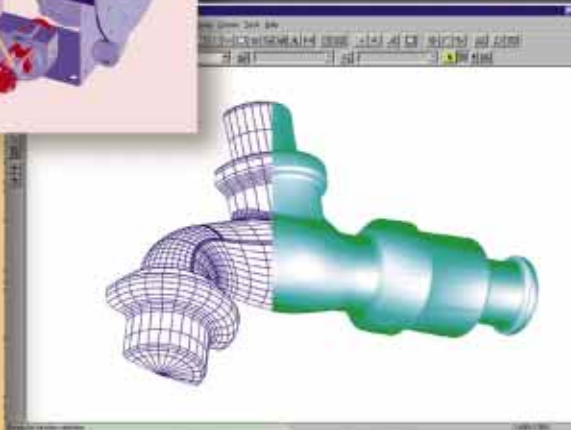
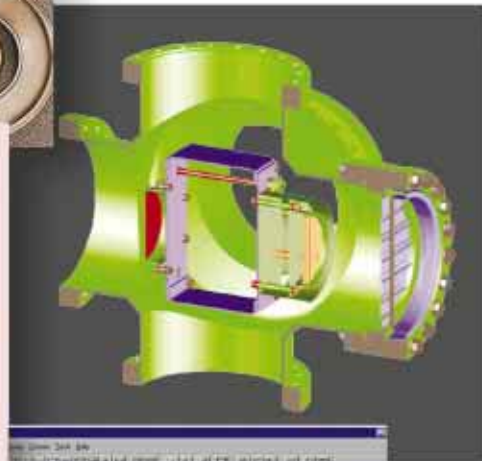
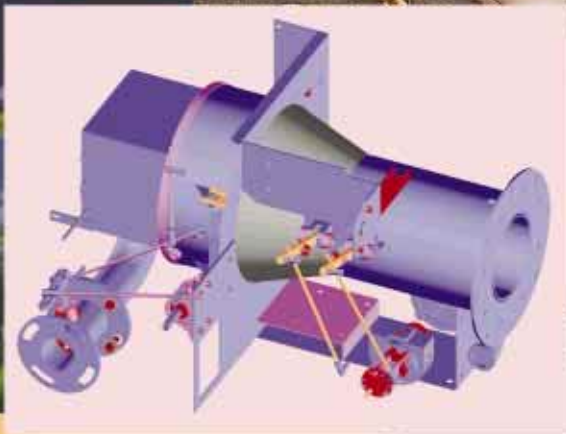


DESIGN POWER
THAT MATCHES
YOUR VISION



CADMAX

CADMAX

lets you focus
on the design
instead of
the software

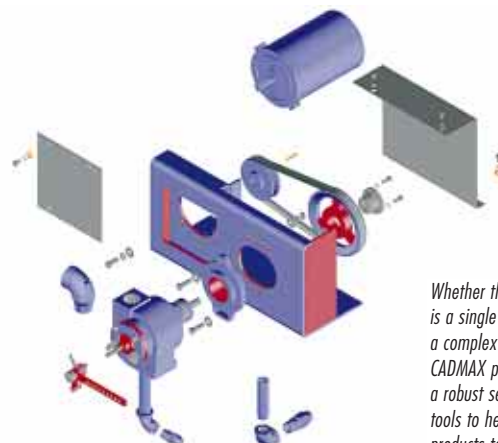
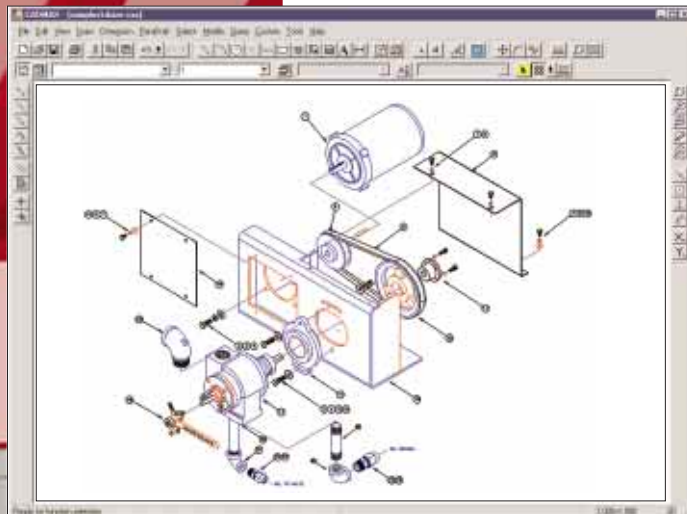


Power, Productivity, and Simplicity.

CADMAX Solid Master is the standard in Windows-based mechanical design software available for purchase through the internet. CADMAX Solid Master offers feature-based solid modeling, boolean solid modeling, free-form surface modeling and 2D drafting, all integrated into a single application with a common user-interface. CADMAX is packed with more design choices and capability than its competition at half the price.

The internet has emerged as a significant communications medium enabling millions of people to share information securely and conduct business electronically. CADMAX is available at less than half the price of competitive mid-range modeling programs, because we use the internet to bypass the reseller and pass the savings directly to you. Our pragmatic approach to CAD includes supporting all design methods, 2D to 3D integration, and internet delivery that gives you the best value for your investment. With CADMAX Solid Master, you get:

- **Parametric, feature-based solid modeling with robust sketching, detail drawings and assemblies**
- **Boolean solid modeling**
- **Free-form surface modeling**
- **2D drafting**
- **Tight 2D to 3D bidirectional integration**
- **Windows familiar user-interface**
- **Ability to mix all design approaches in a single drawing**



Whether the design is a single part or a complex machine, CADMAX provides a robust set of design tools to help get your products to market faster.

Power

CADMAX contains a powerful mix of product, support, and costs that make it the "best-buy" for any mid-range mechanical CAD product. There are seven critical elements that users consider when evaluating mid-range CAD. CADMAX Solid Master excels in all areas with:

- **A can-do product with near-high-end modeling capability**
- **Outstanding performance from solid modeling to 2D**
- **Windows compliance for ease-of-learning and ease-of-use**
- **Modest hardware requirements**
- **Stability and quality demonstrated by 15 years in the market**
- **Mid-range CAD's "best-buy" for license and subscription services**
- **Technical support that demands excellence**

CADMAX Solid Master is a powerful design tool for all types of mechanical parts and assemblies. Whether your design calls for a 2D drawing, a complex shape with sculptured surfaces or a 3D assembly, CADMAX offers a complete and extensive command set for each type of drawing giving you the power and flexibility to work as you please.

CADMAX blends industry leading technology from Parasolid, D-Cubed, International TechneGroup, and the OpenDWG Alliance with its core technology to produce production CAD software that is easy to use, powerful and pragmatic by not forcing you to use a specific design methodology.



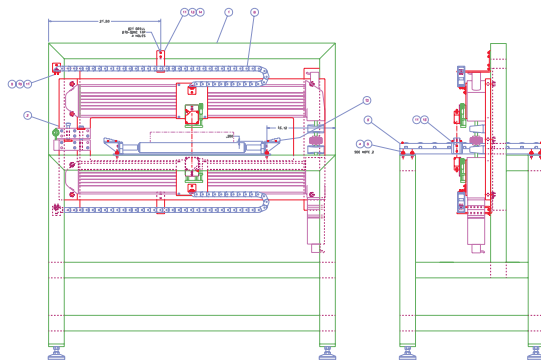
With CADMAX you can model directly on the shaded or hidden line view. It's the natural, intuitive way to work.

Productivity

You'll find CADMAX more productive than comparable mid-range CAD products because it gives you the choice to approach each project using the most appropriate design method. Without the freedom to choose, a business may be forced to use a technology that may not be a "best-fit" for a specific task and therefore be less productive. Here's how CADMAX is more productive for each design approach:

In 2D, each view must be drawn individually, and each new project tends to have very little redundant geometry. Quickly creating line drawings is important. That's why CADMAX provides numerous ways to input, edit, and organize geometry so a user may be very effective creating and editing each 2D view as quickly as possible. Each CADMAX operation uses the minimum number of clicks, and its modeless operation provides optimum flexibility. CADMAX never needs a picture regen, and its redraw performance leads the industry, no matter how big the drawing.

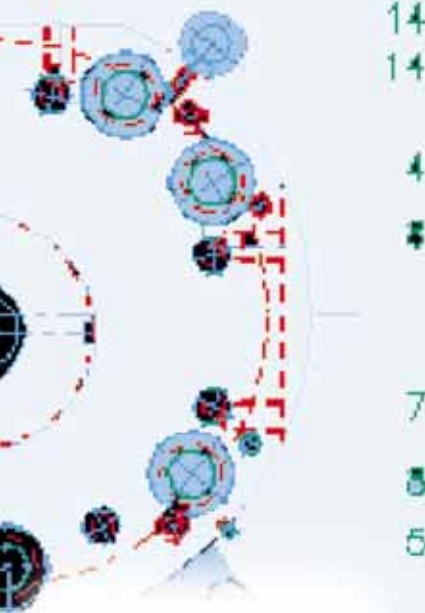
In surface modeling, the user requires the ability to easily create and edit sculptured shapes. CADMAX excels in this area with the ability to automatically convert wireframe geometry to surfaces, 20 different functions for explicit surface definition, extensive surface editing capabilities and the ability to use free-form surfaces with boolean and feature-based solids.



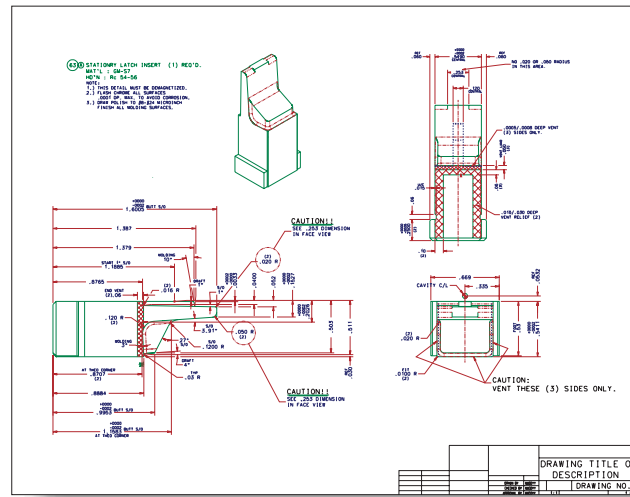
CADMAX lets you easily share designs with other software applications with "best in class" translators.

CADMAX
makes it easy to
work with other
software

ES RAD STEP
 S XY STEP
 W TRANSFORM M
 3.087



CADMAX
 gives you the
 tools for design
 and drafting
 productivity



CADMAX has all the tools you need for high performance design and detailing.

In boolean solids, a model is constructed as though it were a piece of clay without concern for history, constraints, and parametrics. CADMAX rises to the occasion with extensive geometry creation and editing functions, algorithms to automatically convert wireframe to solids, simultaneous input in multiple views, hidden line and shaded views that update incrementally in the background and advanced view editing. Of course, CADMAX includes all of the boolean functions you would expect: conversion of boolean solids to feature-based solids, and full associativity between the model and documentation drawings to ensure outstanding design productivity.

In feature-based solid modeling, creating 2D sketches, modeling, and detailing are all important. That's where CADMAX puts it all together. Sketching is based on our 2D product and contains a robust set of construction and editing features, not the limited set of functions you'll find in other modeling products. Of course, CADMAX contains all of the features you would expect from a feature-based solid modeler so you'll be able to model just about anything. Plus CADMAX lets you model multiple parts in the same file and keep model, documentation, and assemblies in a single file. CADMAX's attention to productivity doesn't stop with producing models either. The detailing tools in CADMAX are based on our years of experience in 2D drafting, so you can be assured that you will have the functions that let you productively generate detail drawings.

Simplicity

The simplicity of CADMAX makes it easy to learn and use. CADMAX provides a consistent operation and common user-interface between feature-based modeling, boolean solid modeling, free-form surface modeling and 2D drafting; so you don't have to learn to use multiple products. You get the freedom to choose the best method for each design project or mix multiple design approaches within a single drawing. Working with familiar Microsoft Windows, CADMAX's exclusive two-level modeless user-interface substantially reduces menu selections and clearly communicates variable settings. Set variables anytime, select before action, one-click history, interactive hidden line, context sensitive prompts, calculator, graphic input and automatic picture clean-up all contribute to a user-interface that successfully blends simplicity with flexibility.

CADMAX's simplicity doesn't end with its outstanding user-interface. CADMAX provides complete drawing compatibility with the ability to import and export DWG, DXF, Parasolid, IGES and STL (export only). Customize CADMAX with macros, drag-and-drop tool bars, custom icons, custom drop-down menus, short-cut keys, custom dialog boxes and multiple user profiles. And if that's not enough, CADMAX offers two different application programming environments, ObjectMAX and CPF.

Finally, what can be simpler than evaluating and purchasing your CAD software directly over the internet.

CADMAX Products

CADMAX Solid Master

The standard for Windows-based production CAD available over the internet. Parametric, feature-based solid modeling, boolean solid modeling, free-form surface modeling and 2D drafting.

CADMAX TrueSurf

CADMAX's entry level CAD, 2D drafting and basic surface modeling.

CADMAX View and View Plus

View, plot, or markup any CADMAX drawing.

CADMAX IGES

"Best in class" data translation

CADMAX ParaDraft

2D parametric drafting

CADMAX Services

Support Services

- Factory direct technical support and updates
- Responsive answers from the developers of CADMAX
- Annual users conference
- Quarterly newsletter
- Subscription service
- Committed to your success

Online Services

- Company information, technical support, updates
- World Wide Web site

Education Services

- Tutorials
- On-site training
- CADMAX training centers



CADMAX

MINIMUM SYSTEM REQUIREMENTS

- Pentium-based PC or compatible
- Windows 95/98/NT
- CD-ROM drive
- Minimum 100Mb hard disk space
- Minimum 64Mb RAM
- Minimum 800 x 600 resolution

CADMAX, TrueSurf, and Solid Master are trademarks of CADMAX Corporation. Windows95/98, and Windows NT are registered trademarks of Microsoft Corporation. AutoCAD is a registered trademark of Autodesk, Inc. All other products, trademarks, and brand names belong to their respective holders. ©Copyright 1996 CADMAX Corporation. All rights reserved.



258 Village Square
Baltimore, MD 21210

Phone: (800) CADMAX-1 (223-6291)

Phone: (410) 532-2803

Fax: (410) 433-1192

E-mail: sales@cadmax.com

Internet: www.cadmax.com